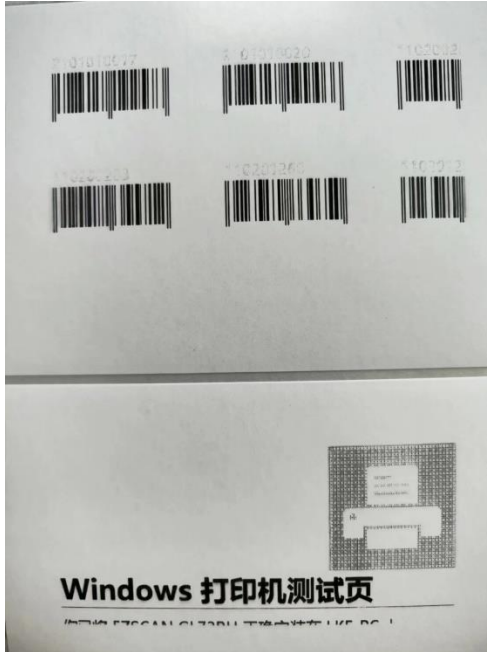


Printer Driver Halftone Adjustment Guide

In some application scenarios, in order to achieve clearer printing results, we need to adjust the settings for driving halftones. The specific settings for adjusting halftone settings are as follows:

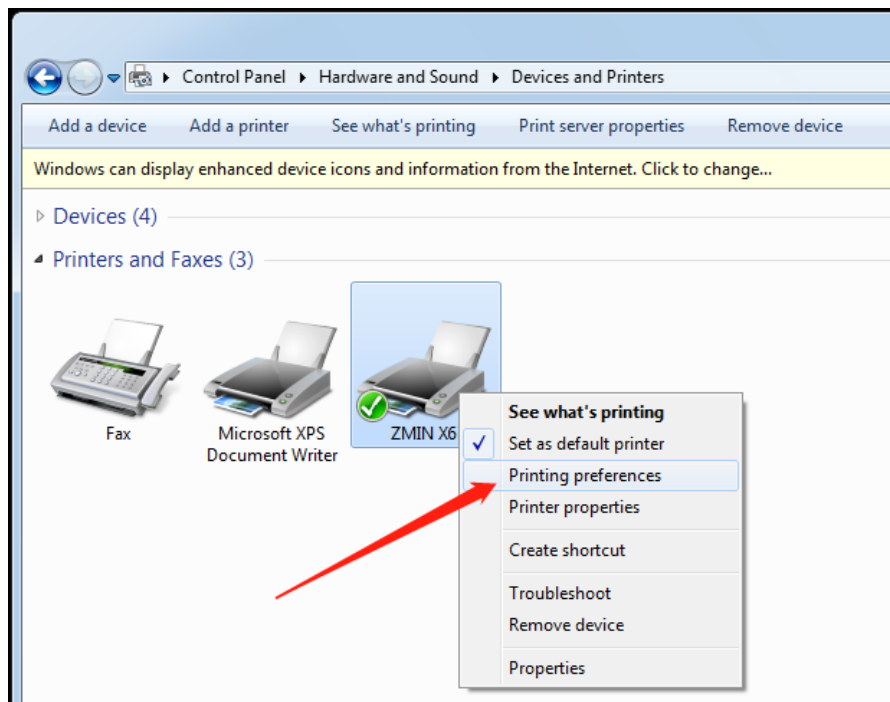


(Print effect before adjustment)

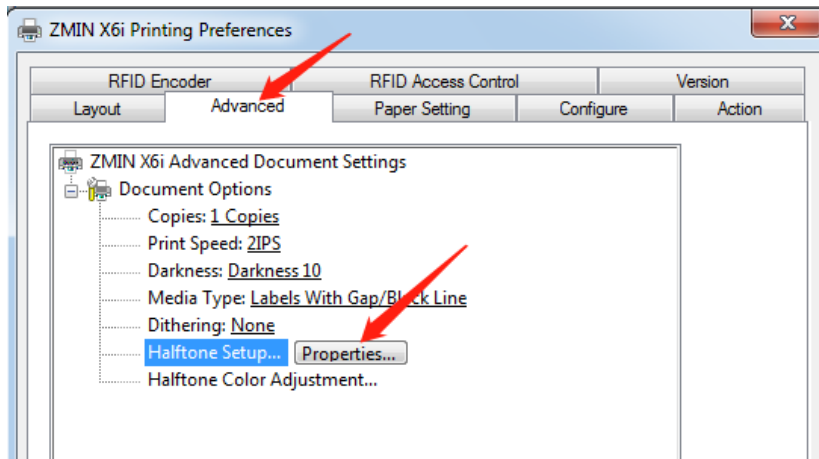


(Print effect after adjustment)

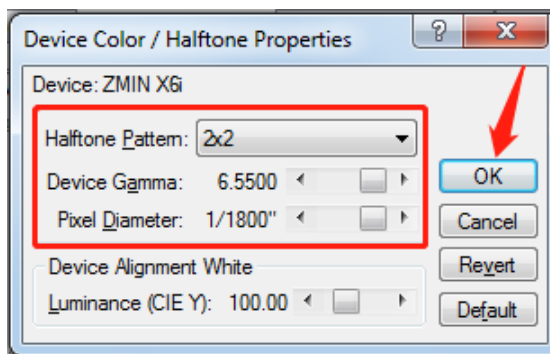
1. Enter the device and printer, right-click on the barcode printer driver that needs to be set, and select "Printing preferences":



2. Select the "Advanced" tab and click the "Properties" button on the right side of the "Halftone Setup":



3. Change the "Halftone Pattern" to "2x2", drag the slider bars for "Device Gamma" and "Pixel Diameter" to the far right, as shown in the following image, and click the "OK" button:



4. Return to "Printing preferences" and click on the "Apply" and "OK" buttons in the bottom right corner to complete the halftone setting.

